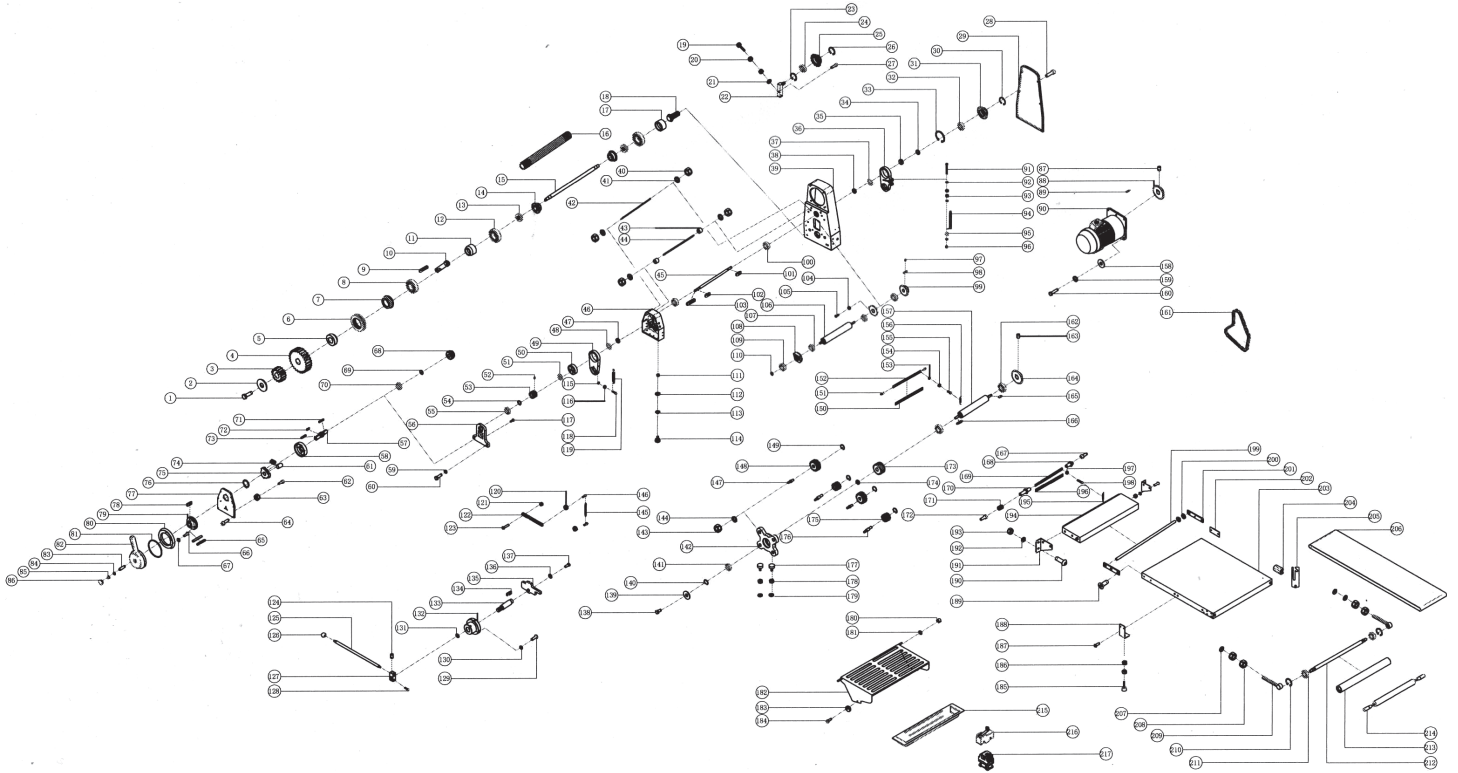


Parts Breakdown

Model **BE-CN-2083-CSS** 42154



Parts Breakdown

Model BE-CN-2083-CSS 42154

Item No.	Description	Position	Item No.	Description	Position	Item No.	Description	Position
AD197	Outer Hexagon Screw Arbor for 42154	1	AD213	Tooth Bar for 42154	42	66790	Screw for 42154	83
AD198	Flat Gasket for 42154	2	66759	Rubber Sleeve for 42154	43	AD207	Lockwasher for 42154	84
66749	Gear (M3 15T) for 42154	3	66758	Fixed Lever for 42154	44	66707	Soft Hat for 42154	85
66748	Gear (M3 27T) for 42154	4	66763	Shaft for 42154	45	AD231	Buckle Head for 42154	86
66746	Washer for 42154	5	66783	Base for 42154	46	AD215	Tighten Screw for 42154	87
66747	Bearing for 42154	6	66729	Washer for 42154	47	66809	Gear (24T) for 42154	88
66785	Bearing Sleeve for 42154	7	AD214	Flat Gasket for 42154	48	AD273	Flat Key (Type C) for 42154	89
66784	Bearing for 42154	8	66731	Roller Adjusting Block for 42154	49	AD305	Motor for 42154	90
AD199	Flat Key (Type C) for 42154	9	66730	Eccentric Mounting for 42154	50	AD249	Outer Hexagon Bolt for 42154	91
44797	Shaft for 42154	10	AD214	Flat Gasket for 42154	51	AD198	Flat Gasket for 42154	92
66781	Bearing Sleeve for 42154	11	AD215	Tighten Screw for 42154	52	66835	Nut for 42154	93
AD200	Bearing for 42154	12	AD216	Brake Apparatus Gear for 42154	53	AD250	Draw Spring for 42154	94
AD201	Thrust Bearing for 42154	13	AD217	Washer (3mm) for 42154	54	AD198	Flat Gasket for 42154	95
AD301	Aluminum Block for 42154	14	66742	Bearing for 42154	55	66835	Nut for 42154	96
AD302	Roller Shaft for 42154	15	AD218	Brake Apparatus Bearing Fixed Seat for 42154	56	AD215	Tighten Screw for 42154	97
44800	Active Roller for 42154	16	AD238	Brake Apparatus Rotating Shaft for 42154	57	AD252	Flat Key (Type C) for 42154	98
AD204	Bearing Holder for 42154	17	AD237	Brake Apparatus Fixed Seat for 42154	58	66808	Gear (18T) for 42154	99
AD205	Adjusting Bolt for 42154	18	AD207	Lockwasher for 42154	59	66689	Bearing for 42154	100
AD206	Rubber Head Screw for 42154	19	AD239	Outer Hexagon Bolt for 42154	60	AD227	Flat Key (Type A) for 42154	101
66795	Nut for 42154	20	AD236	Brake Apparatus Cylinder for 42154	61	AD227	Flat Key (Type A) for 42154	102
AD207	Lockwasher for 42154	21	66770	Screw for 42154	62	AD221	Flat Key (Type C) for 42154	103
AD208	Fixed Axis for 42154	22	66818	Soft Hat for 42154	63	AD256	Nut for 42154	104
AD209	Clamp Spring for Hole Use for 42154	23	AD235	Inner Hexagon Bolt for 42154	64	AD257	Inner Hexagon Head Screw for 42154	105
AD210	Bearing for 42154	24	AD234	5x30 Split Pin for 42154	65	66771	Upper Roller for 42154	106
AD211	Chain Wheel for 42154	25	AD233	Inner Hexagon Bolt for 42154	66	66689	Bearing for 42154	107
AD212	Clamp Spring for Shaft Use for 42154	26	AD232	Lockwasher for 42154	67	66765	Roller Adjustment Block for 42154	108
66708	Screw for 42154	27	AD219	Brake Apparatus Gear for 42154	68	66689	Bearing for 42154	109
AD235	Inner Hexagon Bolt for 42154	28	AD220	Washer (ø22xø32x3mm) for 42154	69	AD258	Clamp Spring for Shaft Use for 42154	110
AD303	Cover for 42154	29	66742	Bearing for 42154	70	66801	Soft Hat for 42154	111
AD248	Clamp Spring for Shaft Use for 42154	30	AD221	Flat Key (Type C) for 42154	71	AD244	Flat Gasket for 42154	112
AD247	Chain Wheel (M3 21T) for 42154	31	AD222	Flat Key (Type A) for 42154	72	AD244	Flat Gasket for 42154	113
66689	Bearing for 42154	32	AD223	Flat Key (Type A) for 42154	73	AD306	Foot Pad for 42154	114
AD246	Clamp Spring for Hole Use for 42154	33	AD224	Spring for 42154	74	AD198	Flat Gasket for 42154	115
66729	Washer for 42154	34	AD225	Brake Apparatus for 42154	75	66835	Nut for 42154	116
66730	Eccentric Mounting for 42154	35	AD226	Clamp Spring for Shaft Use for 42154	76	AD241	Inner Hexagon Bolt for 42154	117
AD245	Roller Adjusting Block for 42154	36	66714	Cover for 42154	77	AD240	Inner Hexagon Bolt for 42154	118
AD214	Flat Gasket for 42154	37	AD227	Flat Key (Type A) for 42154	78	AD242	Draw Spring for 42154	119
66729	Washer for 42154	38	AD228	Brake Apparatus Rotating Disc for 42154	79	AD256	Nut for 42154	120
AD304	Machine Wall for 42154	39	AD229	Dial Disc for 42154	80	66835	Nut for 42154	121
66795	Nut for 42154	40	AD230	Seal Ring for 42154	81	66726	Gear Rack for 42154	122
AD207	Lockwasher for 42154	41	66690	Adjusting Plate for 42154	82	AD265	Inner Hexagon Head Screw for 42154	123

Parts Breakdown

Model BE-CN-2083-CSS 42154

Item No.	Description	Position	Item No.	Description	Position	Item No.	Description	Position
AD267	Tighten Screw for 42154	124	AD253	Draw Spring for Upper Scraper for 42154	156	AD310	Foot Rack for 42154	188
66709	Adjusting Lever for 42154	125	66774	Lower Roller for 42154	157	AD274	Cross Countersunk Screw for 42154	189
AD268	Black Plastic Ball for 42154	126	AD207	Lockwasher for 42154	158	AD274	Cross Countersunk Screw for 42154	190
66706	Adjusting Seat for 42154	127	AD207	Lockwasher for 42154	159	66797	Fixed Plate for 42154	191
AD240	Inner Hexagon Bolt for 42154	128	66790	Screw for 42154	160	AD207	Lockwasher for 42154	192
AD197	Outer Hexagon Screw Arbor for 42154	129	AD308	Chain for 42154	161	66795	Nut for 42154	193
AD198	Flat Gasket for 42154	130	66772	Bearing for 42154	162	66796	Bracket Support Plate for 42154	194
AD266	Flat Gasket for 42154	131	AD215	Tighten Screw for 42154	163	66786	Draw Spring for 42154	195
66701	Permanent Seat for 42154	132	66808	Gear (18T) for 42154	164	66824	Lower Knife for 42154	196
66700	Shaft for 42154	133	AD252	Flat Key (Type C) for 42154	165	66818	Soft Hat for 42154	197
AD222	Flat Key (Type A) for 42154	134	AD223	Flat Key (Type A) for 42154	166	AD269	Cross Head Screw for 42154	198
66728	Adjusting Sheet for 42154	135	AD275	Inner Hexagon Screw for 42154	167	66825	Shaft for 42154	199
AD198	Flat Gasket for 42154	136	AD278	Dowel Pin for 42154	168	AD296	Spacer for 42154	200
AD197	Outer Hexagon Screw Arbor for 42154	137	66823	Lower Knife Sleeve for 42154	169	66800	Link Block for 42154	201
AD263	Outer Hexagon Bolt for 42154	138	AD277	Dowel Pin for 42154	170	AD281	Screw Arbor Fixed Lever for 42154	202
AD207	Lockwasher for 42154	139	AD276	Compression Spring for 42154	171	66826	Bracket Board for 42154	203
AD246	Clamp Spring for Hole Use for 42154	140	AD275	Inner Hexagon Screw for 42154	172	AD280	Big Supporting Plate Fixed Seat for 42154	204
66742	Bearing for 42154	141	66752	Gear (M3 24T) for 42154	173	AD297	Fixed Seat for Rolling Pin for 42154	205
66739	Adjusting Block for 42154	142	66729	Washer for 42154	174	AD279	Conveyor Belt for 42154	206
66795	Nut for 42154	143	66753	Gear (M3 10T) for 42154	175	AD266	Flat Gasket for 42154	207
AD207	Lockwasher for 42154	144	66754	Lower Plastic Gear Shaft for 42154	176	66805	Nut for 42154	208
AD262	Draw Spring for 42154	145	AD272	Rubber Head Screw for 42154	177	66806	Adjusting Lever for 42154	209
AD257	Inner Hexagon Head Screw for 42154	146	66835	Nut for 42154	178	AD258	Clamp Spring for Shaft Use for 42154	210
66738	Upper Plastic Gear Shaft for 42154	147	AD198	Flat Gasket for 42154	179	66784	Bearing for 42154	211
66737	Gear (M3 15T) for 42154	148	66816	Microswitch Sleeve for 42154	180	66829	Active Shaft for 42154	212
AD261	Circlip for 42154	149	AD207	Lockwasher for 42154	181	66828	Conveyor Roller for 42154	213
AD307	Upper Scraper for 42154	150	66815	Safety Guard for 42154	182	AD065	Rolling Pin for 42154	214
AD260	Dowel Pin for 42154	151	66817	Safety Guard Rubber Roller for 42154	183	66814	Flour Tray for 42154	215
66821	Knife Sleeve Pin for 42154	152	66770	Screw for 42154	184	AD311	Microswitch for 42154	216
AD255	Lockwasher for 42154	153	AD309	Supporting Plate Food Pad for 42154	185	AD312	AC Contactor for 42154	217
66818	Soft Hat for 42154	154	66835	Nut for 42154	186			
AD254	Cross Head Bolt for 42154	155	AD269	Cross Head Screw for 42154	187			